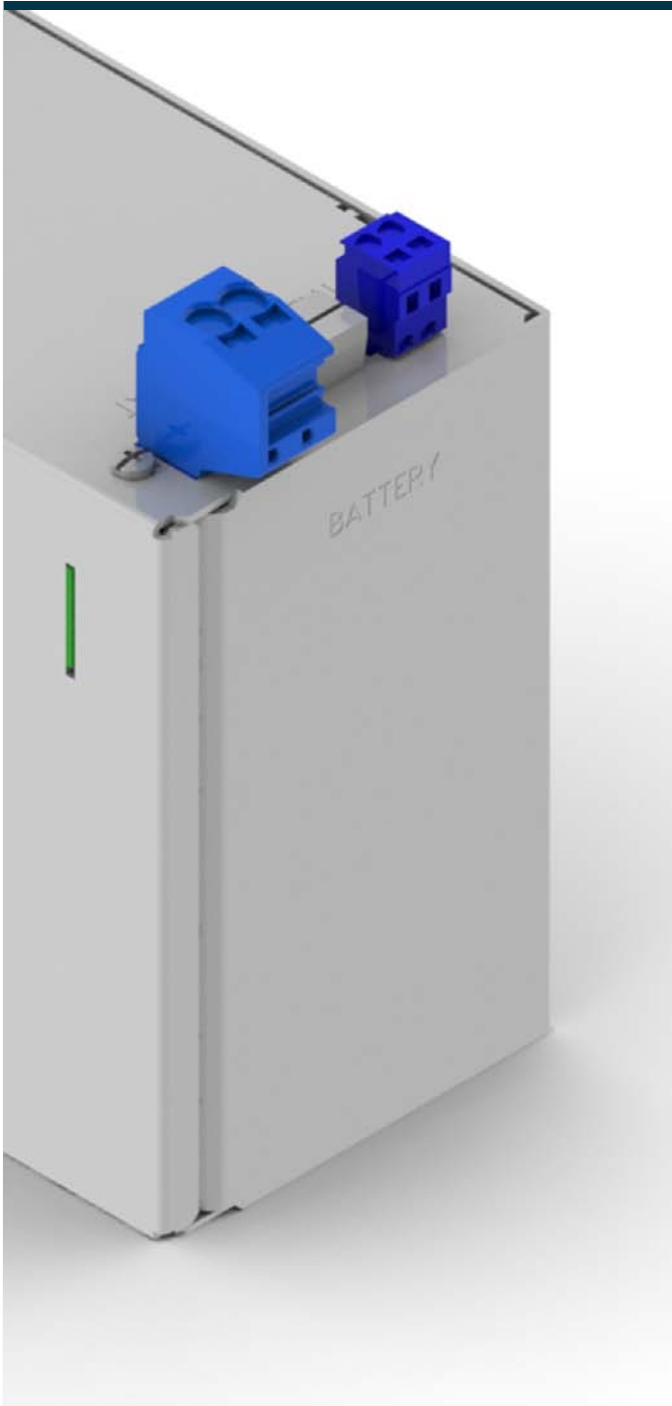


Battery module PBAT



General Data

Input rated voltage 24 Vdc
Output rated voltage 24 Vdc
Protection index IP 20
Ambient temperature -40 °C to +60 °C
Lifetime 15 years / 20°C
Battery module with pure lead rechargeable battery

Advantages

Automatic detection of battery modules at UPS control unit
Reliable early warning signal when battery life expectancy is declining
Extended life expectancy through temperature controlled battery management
Service-friendly spring-loaded connector system

Applications

Battery module for setting up a secure 24 VDC supply following mains failure

Standards

Approvals

UL 508 (E219022) prepared



Battery module **PBAT**



		PBAT-1224-025-0	PBAT-1224-130-0
Electrical data	Typ		
	Input		
	Input rated voltage	24 Vdc	24 Vdc
	Rated capacitie	2.5 Ah	13.0 Ah
	Output		
	Output rated voltage	24 Vdc	24 Vdc
	Output rated current	20 A	40 A
	Internal fuse	1x 25 AT	2x 25 AT
	Parallel connection	Yes	Yes
	Storage medium		
End-of-charge voltage	27 Vdc	27 Vdc	
Environment			
Ambient temperature	-40 °C...+60 °C	-40 °C...+60 °C	
Storage temperature	-40 °C...+60 °C	-40 °C...+60 °C	
Service life	15 years at +20 °C	15 years at +20 °C	
Latest commissioning (only accumulators)	6 months at +30 °C to +40 °C	6 months at +30 °C to +40 °C	
Safety and protection			
Protection index	IP 20	IP 20	
Safety class	III	III	
Order numbers			
available from	Q1 2016	Q1 2016	
Order Number	PBAT-1224-025-0	PBAT-1224-130-0	

1.1

1.2

1.3

2.1

2.2

3.1

3.2

3.3

4.0

5.1

5.2



Battery module PBAT



Mechanical data	Typ	Fixing method	Terminals Output	Terminals Input	Temperature sensor/ communication connection	Weight	Dimension picture (in mm)				
							A	B	C	D	E
	PBAT-1224-025-0	Direct screw fastening (optional)	Wago series 831, max. 10 mm ²	Wago series 831, max. 10 mm ²	Wago Series 231, 5 mm ²	3.80 kg	180.7	168	160	86	160
	PBAT-1224-130-0	Direct screw joint	Wago series 831, max. 10 mm ²	Wago series 831, max. 10 mm ²	Wago series 231, max. 2,5 mm ²	12.30 kg	225	187	186.5	142.2	196.5

Dimension pictures

